



www.fortuneandcoates.co.uk

FORTUNE & COATES

The People's Estate Agent



30 The Hides, Harlow, CM20 3QL

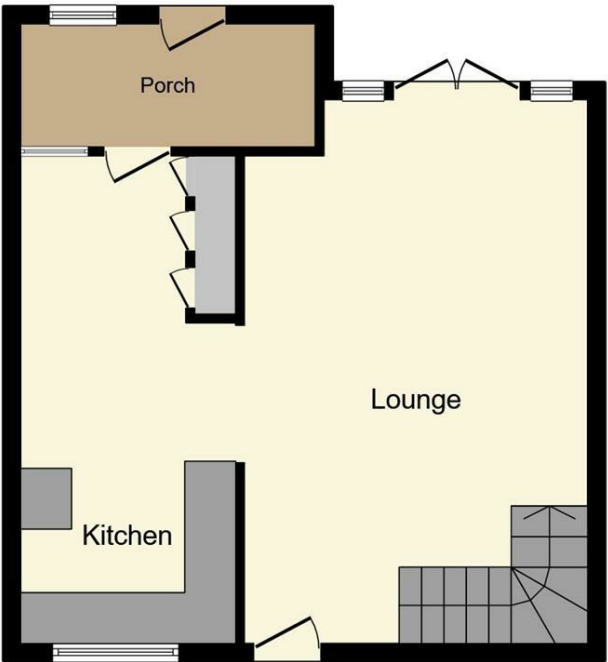
Offers in excess of £280,000

Guide Price: £270,000 - £290,000

Located just a short walk from the hospital, train station and all of your local amenities, is this two bedroom terraced house. To the ground floor, you are presented a large lounge that leads to the spacious kitchen and dining room. This family home also offers a utility room for extra storage space. To the first floor, you are presented with the large landing that leads to two well proportioned bedrooms as well as a family bathroom to share. To the rear of this terraced house, the accommodation comprises a 35ft garden with the perfect ratio of lawn to patio area making this garden pleasant for entertaining.

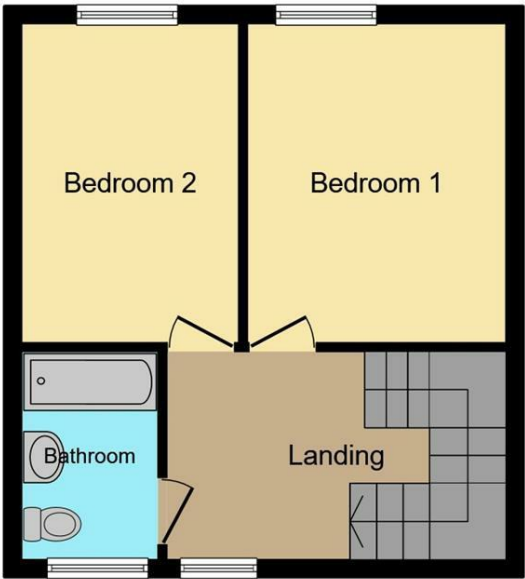
- Lounge 18'8" x 11'5" (5.7m x 3.5m)
- Dining Room 11'9" x 6'6" (3.58m x 1.98m)
- Kitchen 6'9" x 6'8" (2.06m x 2.03m)
- Utility Room 10'3" x 4'2" (3.12m x 1.27m)
- Bathroom 5'8" x 5'6" (1.73m x 1.68m)
- Bedroom One 13'7" x 11'0" (4.14m x 3.35m)
- Bedroom Two 13'6" x 8'9" (4.11m x 2.67m)
- Garden 35'0" x 20'0" (10.67m x 6.1m)

Floor Plan



Ground Floor

Floor area 45.8 sq.m. (493 sq.ft.) approx



First Floor

Floor area 36.0 sq.m. (387 sq.ft.) approx

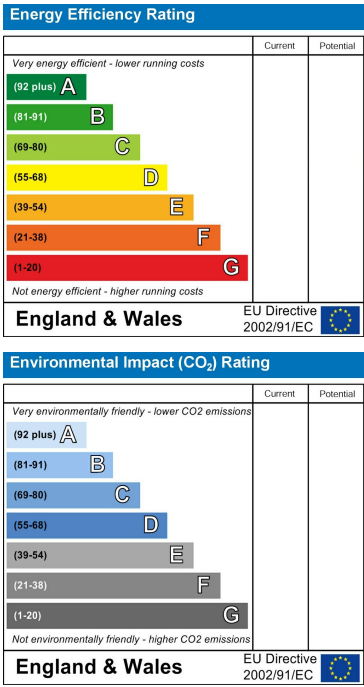
Total floor area 81.7 sq.m. (880 sq.ft.) approx

This Floor Plan is for illustration purposes only and may not be representative of the property. The position and size of doors, windows and other features are approximate. Unauthorized reproduction prohibited. © PropertyBOX

Area Map



Energy Efficiency Graph



These particulars, whilst believed to be accurate are set out as a general outline only for guidance and do not constitute any part of an offer or contract. Intending purchasers should not rely on them as statements of representation of fact, but must satisfy themselves by inspection or otherwise as to their accuracy. No person in this firms employment has the authority to make or give any representation or warranty in respect of the property.